

GenPreserve™ GS Sample Collection Instructions

For research use only

Instructions

Unfold this sheet and review both sides before starting to collect your sample.

Intended use

GenPreserve™ GS is intended for the collection of oral samples for preservation, transportation, and storage of biological samples at ambient conditions.

Indication for use

GenPreserve™ GS is intended for use in the non-invasive collection of buccal samples for downstream DNA processing. Buccal cells are collected and transferred to the GenSwab™ Sample Collection card using the attached collection handle. Buccal samples collected using the GenPreserve™ GS are stabilized and isolated for use in downstream testing applications. Buccal samples collected using the GenPreserve™ GS can be transported and stored for decades at ambient conditions.

About this document

In the following steps, you will use the GenPreserve™ GS Sample Collection kit to collect DNA samples from the cells in your cheeks. Please set aside approximately 5 minutes to focus on and complete this process.

The proper collection, testing, and preservation of your DNA sample helps further our understanding of human diseases and pathogens.

Contact your provider if any of the following occur:

- If the foam swab head touches anything (other than the inside of the packaging)
- If the pink square area on the GenSwab™ Sample Collection card touches anything (other than the inside of the packaging)
- A component is missing from your kit

Storage and stability

Store at 15–30°C (59–86°F) until use. The GenSwab™ Sample Collection kit is stable until the expiration date marked on the packaging. All GenSwab™ Sample Collection kit components should be at room temperature before use.

Specifications

Foam swab/handle

Foam Diameter: 7/8" (23 mm)

Specimen card

Overall Size: 2 1/6" × 3 5/16" (53 mm × 84 mm)

Biosample Transfer Area: 1 1/8" × 1 1/8" (29 mm × 29 mm)

Cleaning Area: 3/4" × 5/16" (19.6 mm × 7.8 mm)

GenPreserve™ GS Sample collection components

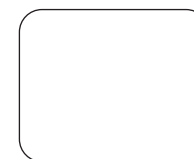
Part A

GenSwab™ Sample Collection Device



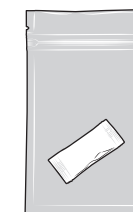
Part B

Personal information sticker



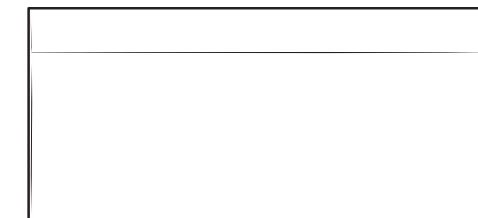
Part C

GenDry™ GS Pouch with desiccant

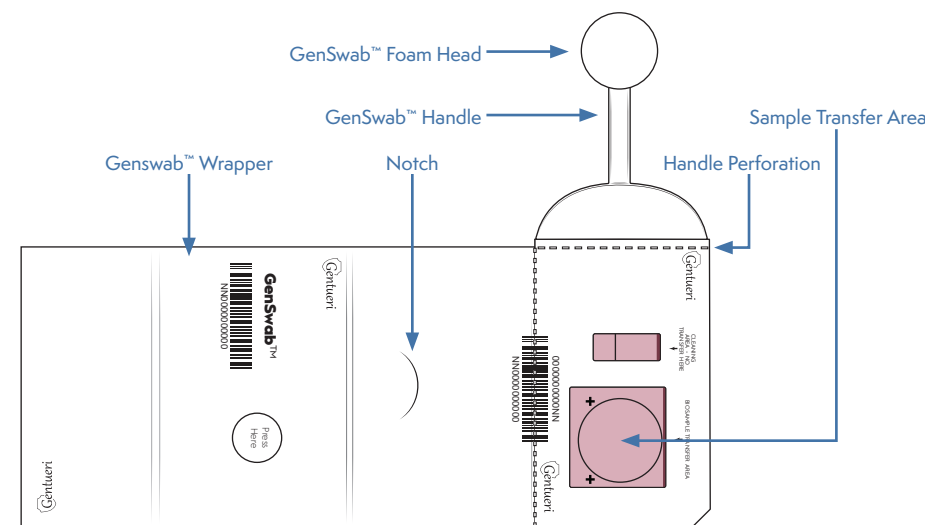


Part D

Shipping mailer

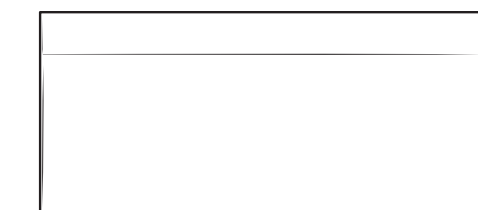


Test Card Parts:



Part E

Return shipping mailer



Also needed (but not included):

- Soap and water or hand sanitizer
- Timing device

! Precautions

1. For research use only.
2. Treat all samples as potentially infectious. Follow universal precautions when handling samples, this kit and its contents.
3. Proper sample collection, storage and transport are essential for correct results.
4. Leave the GenSwab™ Sample Collection test card sealed in its foil pouch until just before use. Do not use if pouch is damaged or open.
5. Do not use the GenPreserve™ GS Sample Collection kit past its expiration date.
6. Do not mix components from different GenPreserve™ GS Sample Collection kits.
7. Do not reuse any components from the GenPreserve™ GS Sample Collection kit.
8. Inconclusive results may occur if these instructions are not followed.
9. The GenSwab™ Sample Collection Device and samples should be handled as though they could transmit disease after collection. Observe established precautions against microbial hazards during use and disposal.

Gentueri Technical Support

US: +1-608-949-8568

support@gentueri.com

Gentueri Inc.

312 Locust Dr.

Verona, WI 53593

© 2022 Gentueri Inc. All rights reserved.

All trademarks used are trademarks of Gentueri Inc. or their respective owners.

SPEC-001 R1 GenPreserve™ GS Sample Collection Instructions 0322

START HERE

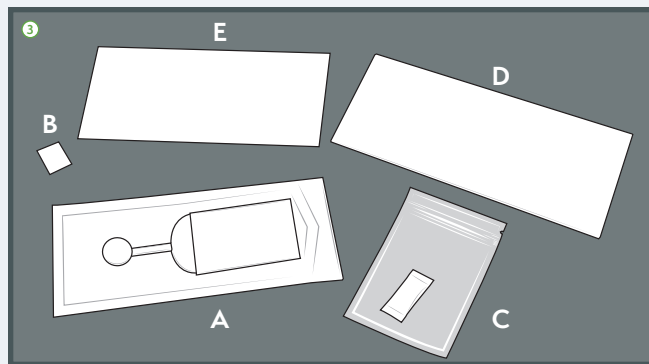
GenPreserve™ GS

Sample Collection Instructions

! Carefully read these instructions before you open any of the sample collection components and start to collect your sample.

STEP 1: Prepare to collect your sample

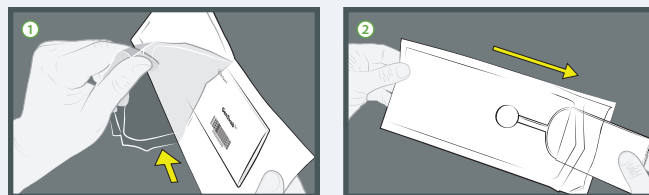
- 1 Refrain from eating or drinking for **30 minutes** before collecting your sample.
- 2 Wash or sanitize your hands.
- 3 Confirm that you have all the items necessary to collect and return your sample:
 - GenSwab™ Sample Collection Device (Part A)
 - Personal information sticker (Part B)
 - GenDry™ GS Pouch with desiccant (Part C)
 - Shipping mailer (Part D)
 - Prepaid return shipping mailer (Part E)
 - Timing device (not included)



! DO NOT DISCARD ANY OF THE PACKAGING AT THIS TIME

STEP 2: Get the GenSwab™ collection device ready

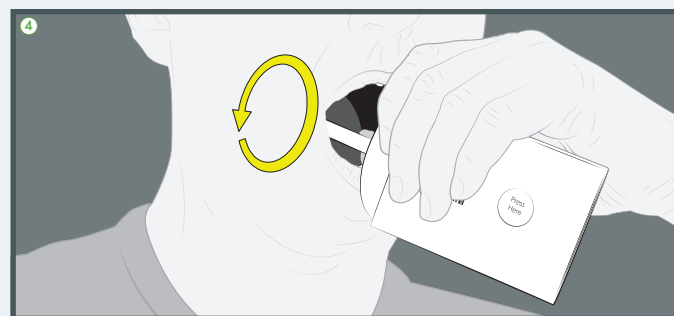
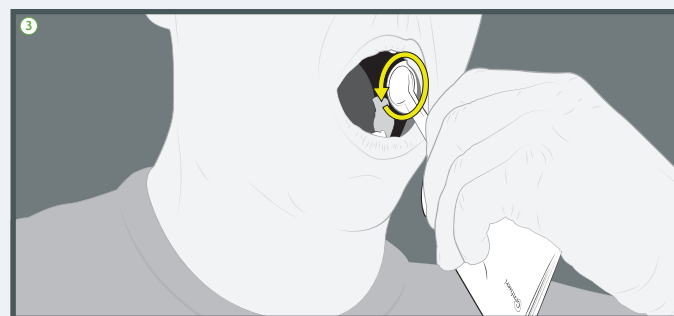
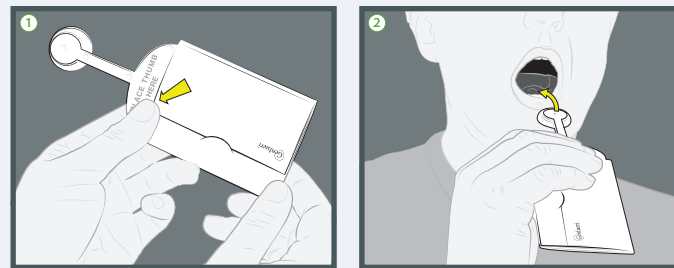
- 1 Open the GenSwab™ Sample Collection Device pouch (Part A) by peeling where indicated.
- 2 Remove the GenSwab™ Sample Collection Device from the package.



! BE CAREFUL NOT TO TOUCH THE FOAM HEAD ON THE GENSWAB™ COLLECTION DEVICE

STEP 3: Collect your sample

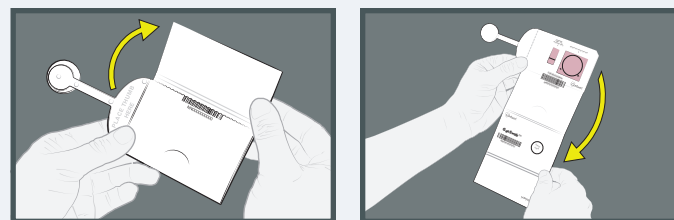
- 1 Hold the GenSwab™ Sample Collection Device by placing your thumb at the base of the handle where indicated.
- 2 Place GenSwab™ Sample Collection Device foam head under your tongue for **20 seconds**.
- 3 Firmly rub the GenSwab™ Sample Collection Device foam head against the inside of your cheek in a broad circular motion for a minimum of **20 seconds**.
- 4 Firmly rub the GenSwab™ Sample Collection Device foam head against the inside of your **other cheek** in a broad circular motion for a minimum of **20 seconds**.



! DID YOU PLACE THE GENSWAB™ COLLECTION DEVICE UNDER YOUR TONGUE AND SWAB INSIDE EACH CHEEK?

STEP 4: Get ready to transfer your sample

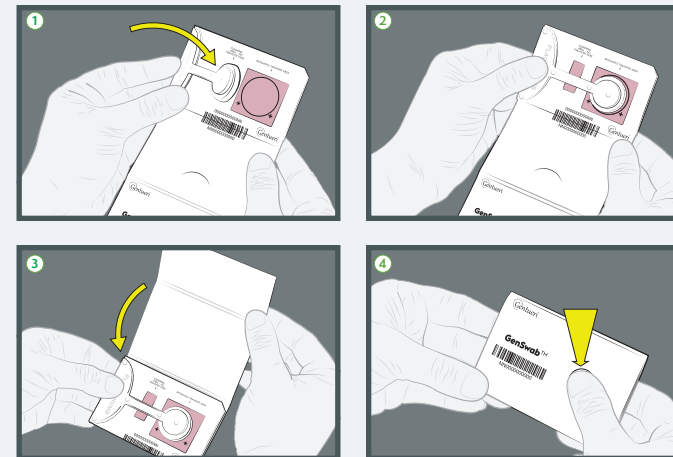
Open the card wrapper on the GenSwab™ Sample Collection Device.



! DO NOT TOUCH THE FOAM HEAD ON THE GENSWAB™ COLLECTION DEVICE OR THE PINK AREA ON THE SAMPLE CARD

STEP 5: Transfer your sample

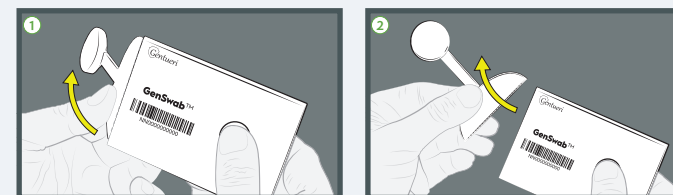
- 1 Fold in the GenSwab™ Sample Collection Device handle.
- 2 Bring the foam head of the GenSwab™ Sample Collection Device into complete contact with the larger pink area on the sample card.
- 3 While keeping the foam head of the GenSwab™ Sample Collection Device in contact with the pink area, fold the wrapper back over the sample card and handle.
- 4 Press firmly where indicated on the wrapper for **20 seconds** to transfer your sample.



+ YOU CAN EXPECT TO SEE THE PINK AREA CHANGE TO WHITE IN THE AREAS WHERE YOUR SAMPLE WAS SUCCESSFULLY DEPOSITED ON THE CARD.

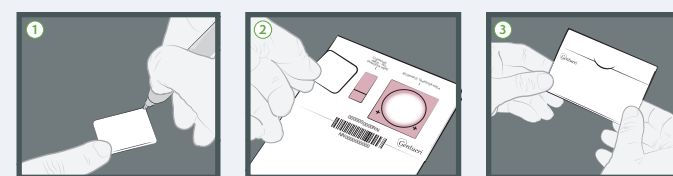
STEP 6: Discard the handle

- 1 Open the sample card wrapper and fold back the GenSwab™ Sample Collection Device handle at the perforation until it breaks.
- 2 Discard the GenSwab Sample Collection Device handle.



STEP 7: Fill out the card with your information

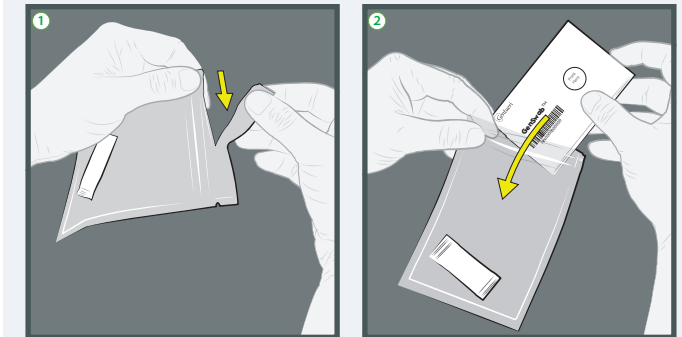
- 1 Carefully fill in the requested details on the personal information sticker (Part B).
- 2 Attach it to the sample card **without touching the pink and white areas containing your sample**.
- 3 **Refold** the wrapper over the sample card and **secure the closure** by using the notch as indicated.



+ THERE ARE TWO PERSONAL INFORMATION STICKERS (PART B) INCLUDED IN YOUR KIT IN CASE YOU HAVE PROBLEMS WITH ONE OF THEM.

STEP 8: Place your sample in GenDry™ GS Pouch

- 1 Open the GenDry™ GS Pouch (Part C) by tearing at the notch and unzipping the pouch.
- 2 Insert the folded sample card **with the barcode visible** into the GenDry™ GS Pouch and reseal. **Confirm that the desiccant is still in the pouch.**

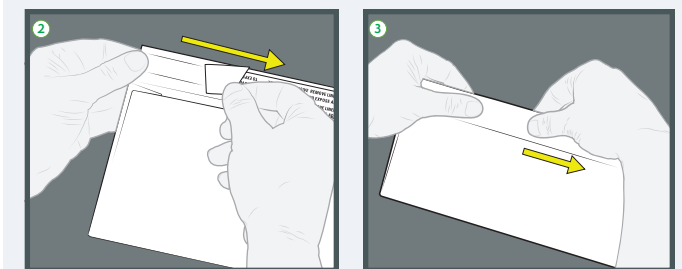
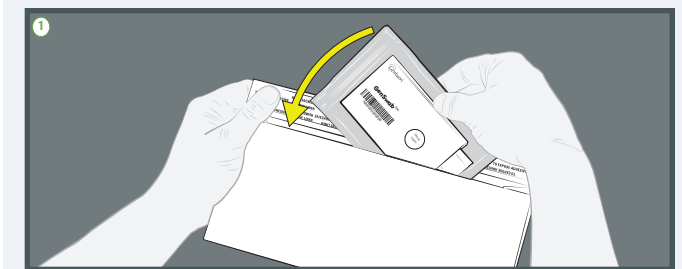


! DO NOT DISCARD THE DESICCANT

+ MAKE SURE THE BARCODE ON THE FOLDED SAMPLE CARD IS VISIBLE WHEN IT IS INSIDE THE GENDRY™ GS POUCH

STEP 9: Prepare to ship your sample

- 1 Insert the sealed GenDry™ GS Pouch into the return shipping mailer (Part E).
- 2 Remove the adhesive covering on the return shipping mailer.
- 3 Press firmly to seal.



STEP 10: Ship your sample and finish

- 1 Refer to the address on the prepaid shipping mailer (Part E) and deliver it to the appropriate shipping company or post office **within 24 hours** of collecting your sample.
- 2 Discard all remaining packaging.

+ SHIP YOUR SAMPLE WITHIN 24 HOURS OF COLLECTION

See other side for important information